



Bibele ya ka ya ho Etsa le ho Ithuta Buka ya 3



www.biblesociety.co.za
bible society of south africa

Ithute ho
bala le ho ngola
Porograma ya Litherasi

Bibele ya ka ya ho Etsa le ho Ithuta Buka ya 3

Sesotho Literacy Programme
First digital edition 2020

© Bible Society of South Africa 2020

Illustrations © Bible Society of South Africa 1985
Illustrations by Annie Vallotton

All rights reserved. No part of this book may, without prior written permission of the copyright holder, be reproduced or transmitted in any form or by any means, electronic, mechanical or otherwise, either through photocopying, writing, audio recording, or any other system for information storage and retrieval.

Published by the Bible Society of South Africa
P O Box 5500, Tyger Valley 7536, Bellville

www.biblesociety.co.za

Epub-format ISBN 978-0-7982-2402-4
PDF-format ISBN 978-0-7982-2401-7



bible society
of south africa





Tswalo ya Jesu

Josefa le Maria ba tloha
motseng wa Nasaretha
ba ya motseng wa Betlelehema.



Maria a tswalla
ngwana Betlelehema.

A mo phutha ka masela,
a mo robatsa ka sejelong.

Ha ba fihla Betlelehema,
ba hloka sebaka
tlung ya baeti.





Badisa ba ne ba lebela mehlape
ya bona bosiu.

Badisa ba ne ba qeta
bosiu naheng.



Ba ne ba hlokomela
mehlape ya bona.

Lengelo la Morena la
fihla ho bona.

Kganya ya Morena ya
ba teela hare,
mme ba tshaba haholo.

Lengelo la re ho bona:

“Se tshabeng!

Ke le tlišeditse Molaetsa o Molemo.



Kajeno motseng wa Betlelehema

Jesu o tswetswe.

Ke yena Morena.

Le tla fumana lesea le phuthilweng
ka masela le robotse ka sejong.”

Tlotla e be ho Modimo!

Tlotla e be ho Modimo!



Hanghang lebothohadi la mangeloi le
tswang lehodimong la bina:

“Tlotla e be ho Modimo
mahodimong a hodimodimo,
kgotso e be lefatsheng
ho batho ba mo kgahlang.”

Mangeloi a kgutlela lehodimong.



Yaba badisa ba buisana, ba re:
“A re yeng Betlelehema,
re yo bona taba eo
e etsahetseng.”

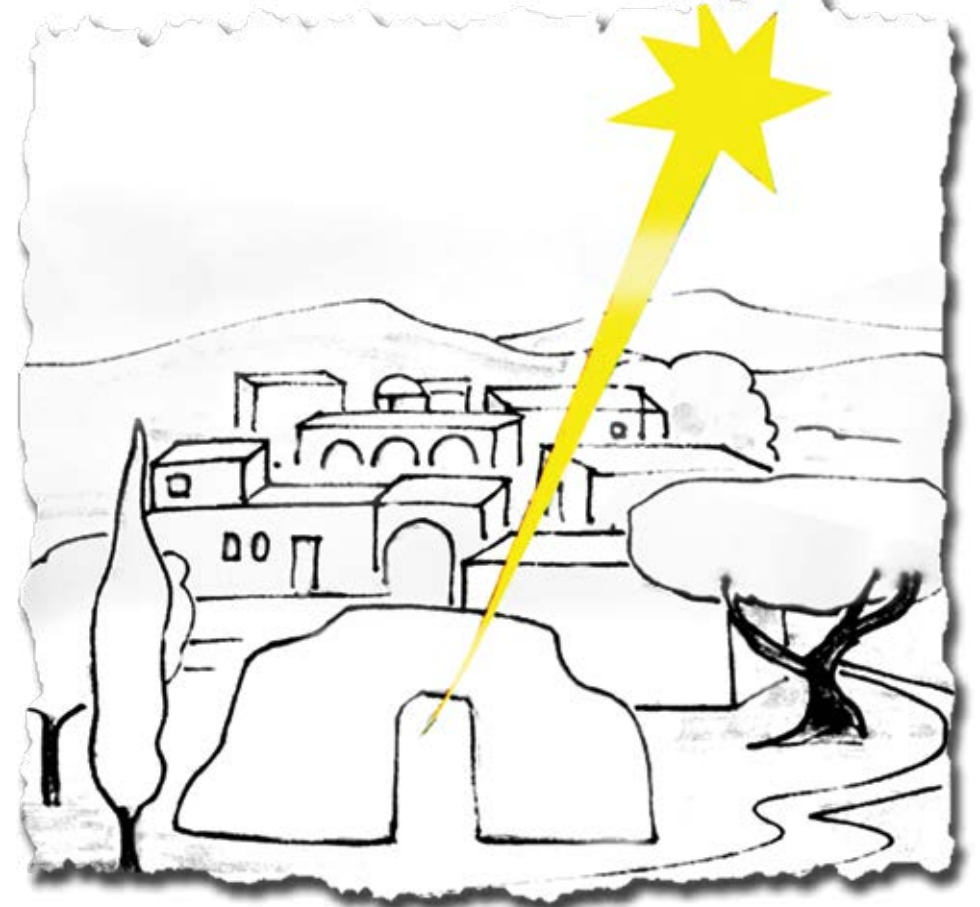
Ba ya ka potlako,
mme ba fumana Maria le Josefa,
mme ba bona le lesea
le robaditsweng ka sejong.



Banna ba bohlale ba fihla ba batla Jesu.

Ba ne ba etswa hole botjhabela.

Naledi e ile ya ba thusa
ho fumana moo Jesu a leng teng.



Naledi e ile ya etella
banna ba bohlale pele,
ho fihlela e ema hodima moo
ngwana a neng a le hona teng.

Ha banna bana ba bona naledi,
ba thaba haholo!



Banna ba bohlale ba
kena ka tlung.

Ha ba bona ngwana
le mmae Maria,
ba itihela fatshe,
mme ba mo kgumamela.

Ba ntsha dimpho,
ba nyehella ngwana.

Ho ne ho le kgauta,
mmira le mokubetso.



a **b** Malepa a mantswe

Sheba ditshwantsho tse ka tlase mona
mme o rarolle lentswe le pela sona.



n	l	l	e	o	i	e	g
---	---	---	---	---	---	---	---

	n						
--	---	--	--	--	--	--	--



d	n	e	i	l	a
---	---	---	---	---	---

n				
---	--	--	--	--



e	u	j	s
---	---	---	---

		s	
--	--	---	--

2³ Keriti ya Dinomoro

Tlatsa dinomoro tse siilweng ka hara diboloko.

1	+	1	=	<input type="text"/>
+		+		+
2	+	3	=	<input type="text"/>
=		=		=
<input type="text"/>	+	<input type="text"/>	=	<input type="text"/>

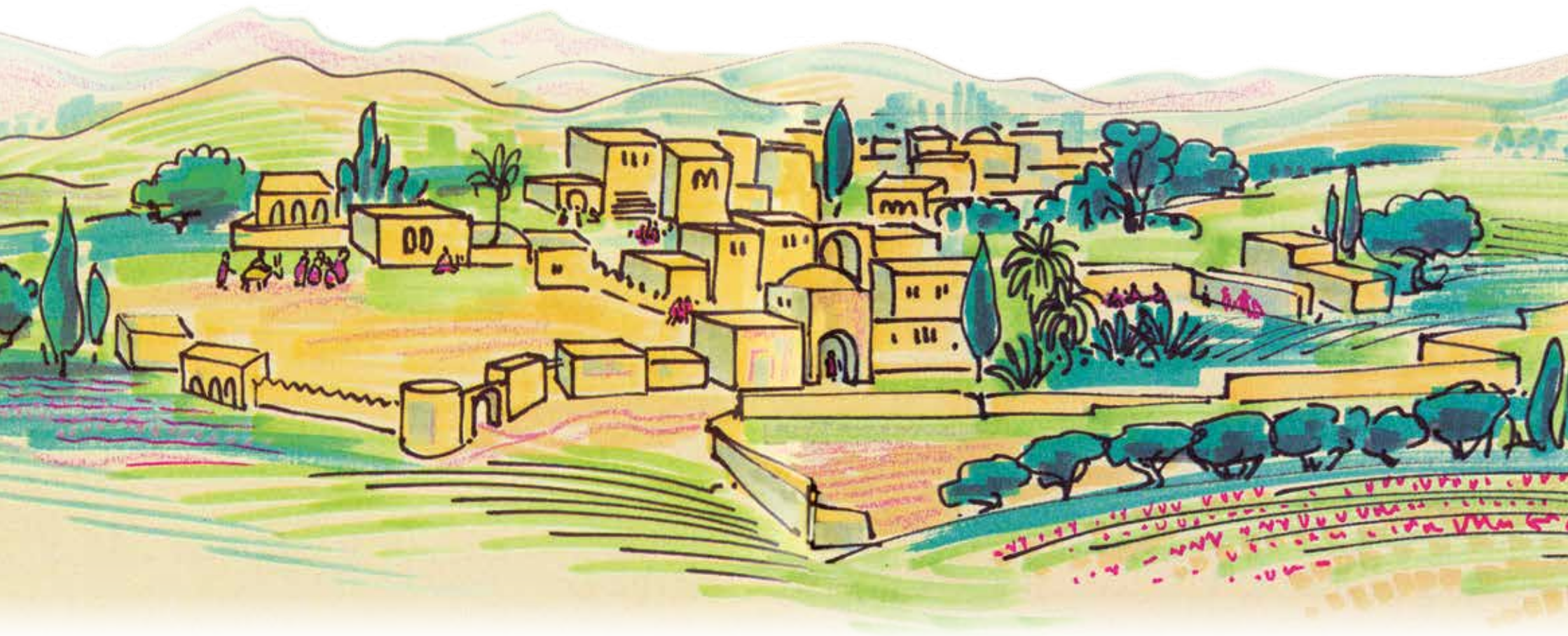
$$3 - 1 = \text{$$

$$2 - \text{$$

$$\text{} + 2 = 6$$



Jesu moketeng wa lenyalo



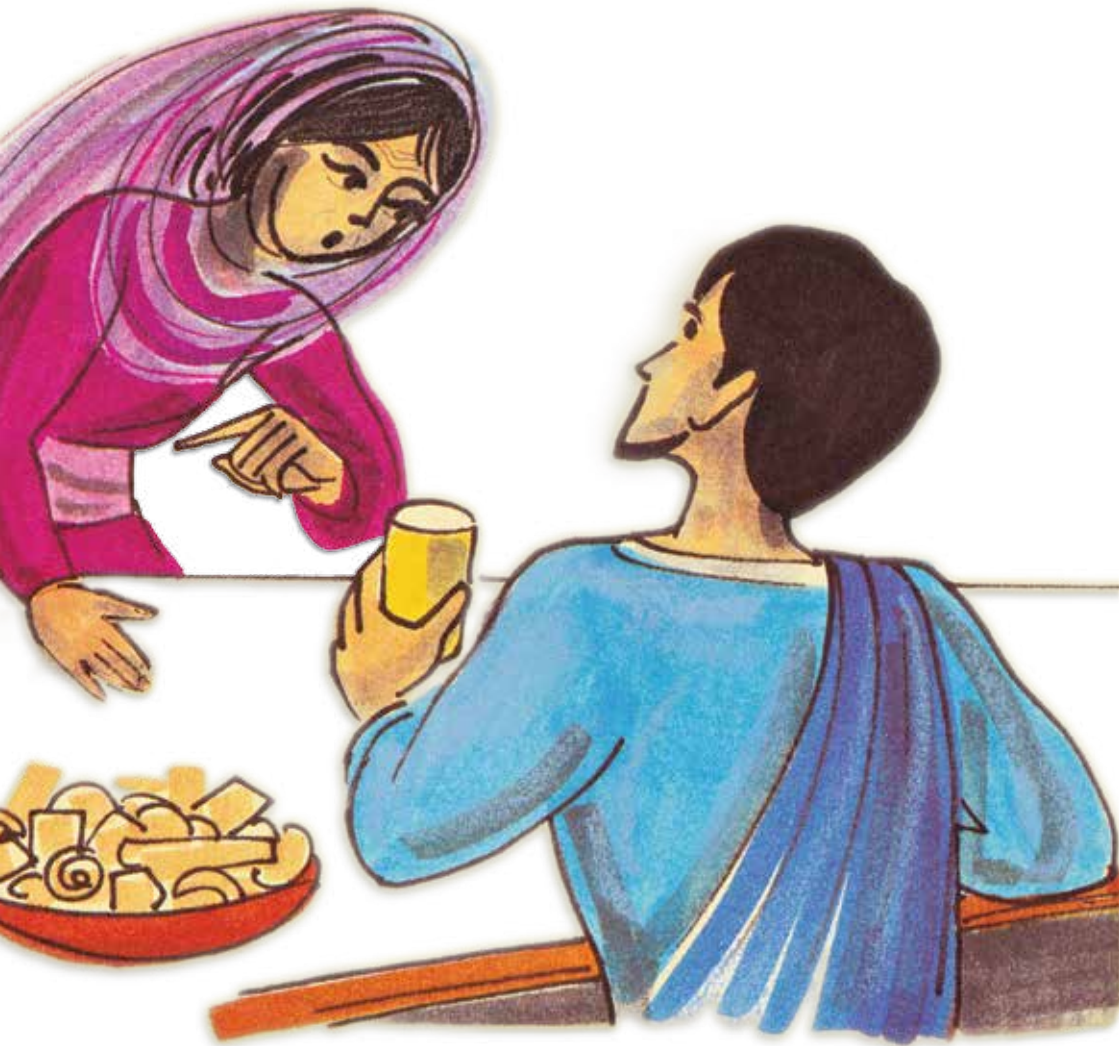
Motseng wa kana
ho ne ho ena le mokete wa lenyalo,

mme mma Jesu
o ne a le teng.

Jesu le barutuwa le bona
ba ne ba memilwe.



Empa veine ya fela.



Empa Jesu a re ho yena:

“Ke hobaneng o mpoellang seo
ke tshwanetseng ho se etsa?”

Nako ya ka ha e eso fihle.”

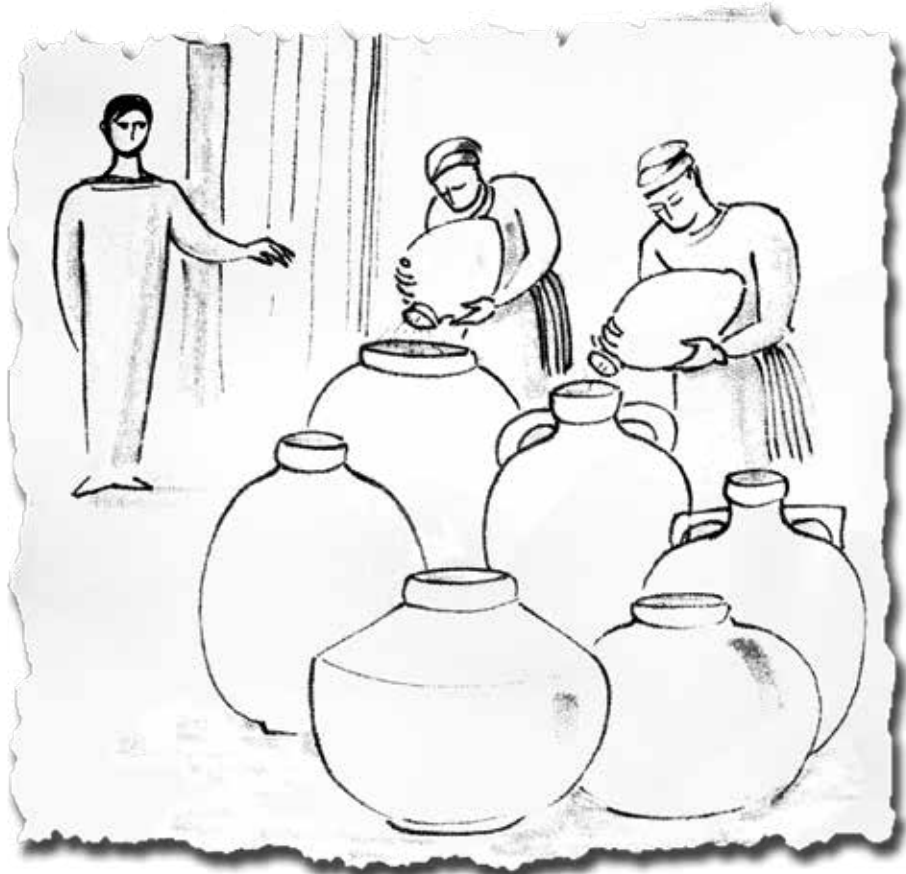


Mma Jesu a re ho yena:
“Ha ba na veine.”

Mmae a bolella bahlanka, a re:
“Eng le eng eo a le bolellang
yona le e etse.”



Ho ne ho ena le dinkgo tse
tshelletseng tsa majwe.



Jesu a re ho bahlanka:

“Tlatsang dinkgo tsena ka metsi.”

Ba di tlatsa tswete!

Jwale Jesu a bolella bahlanka, a re:
“Kgang jwale, mme le isetse
motsamaisi wa mokete.”



Motsamaisi wa mokete a latswa
metsi a fetohileng veine.

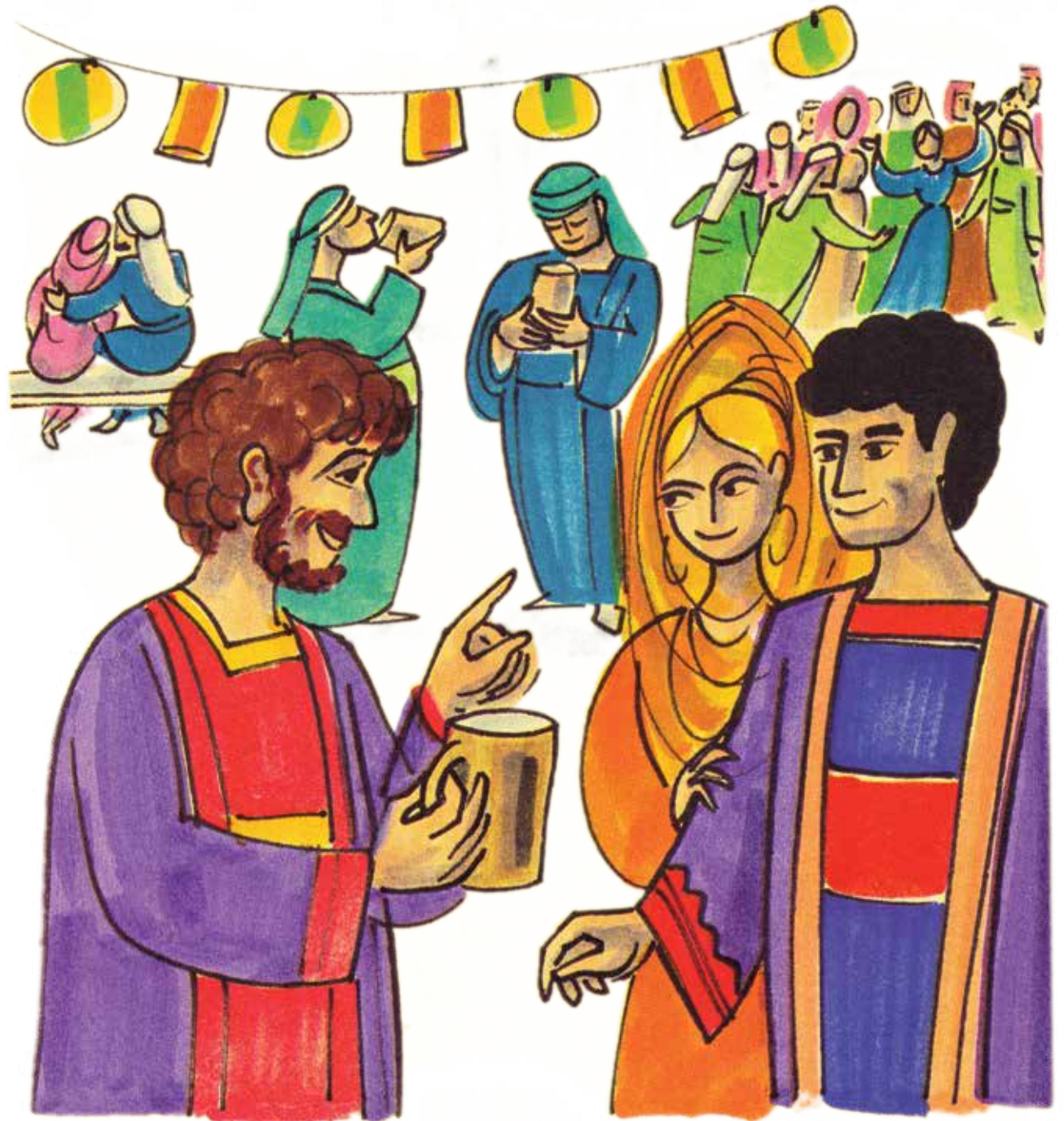
Motsamaisi wa mokete o
ne a sa tsebe moo veine ena e
tswang teng.



Yaba o bitsa monyadi,
a re ho yena:

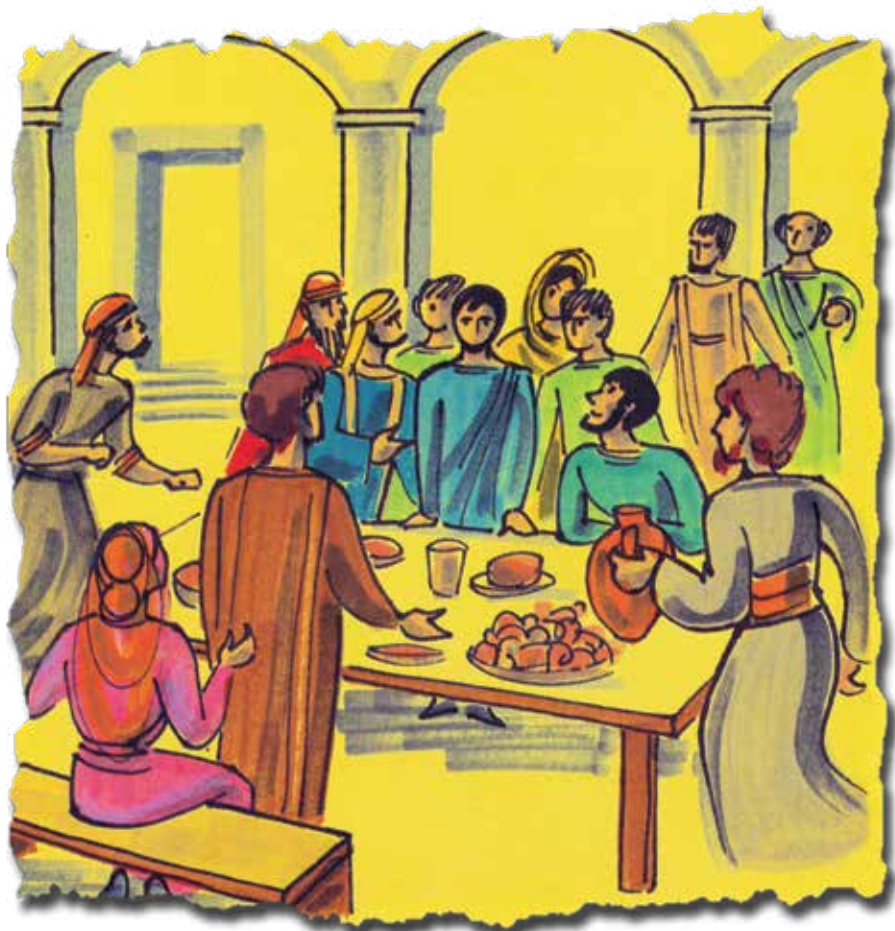
“Batho bohle ba ye ba qale
ka veine e monate pele.

Empa wena o ntse o bolokile
veine e monate
ho fihlela jwale!”



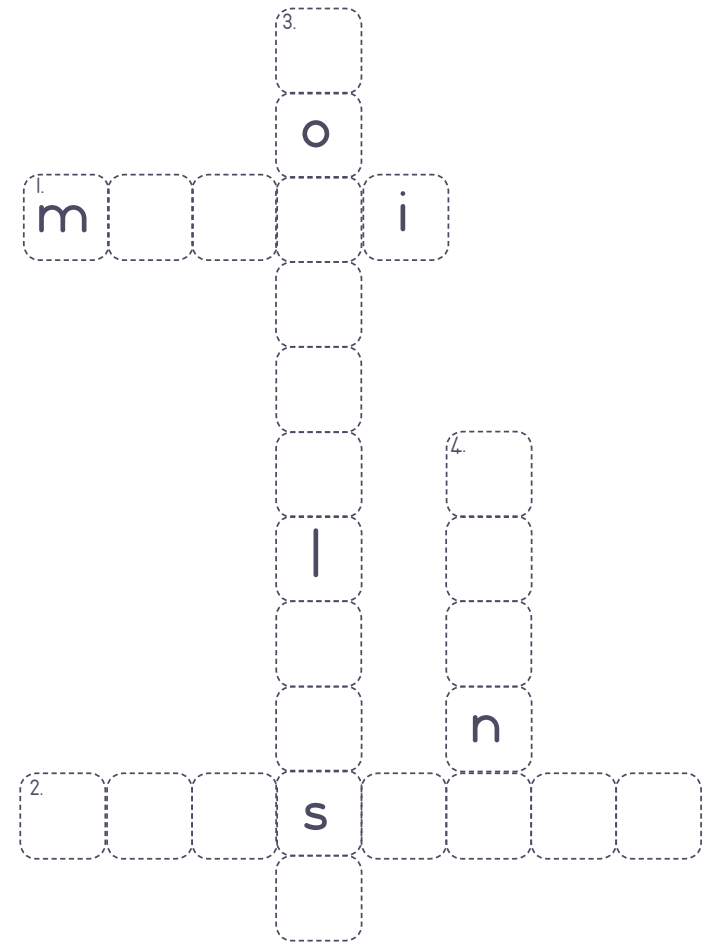
Mohlolo ona wa pele Jesu
o o entse Kana.





Ho tloha mohlang oo barutuwa
ba hae ba dumela ho yena.



a **b** Phazele ya Mantswe

Qetella Mantswe a Phazele ka ho nyalanya
setshwantsho bakeng sa nomoro ka nngwe.



1. 
2. 
3. 
4. 

²₃ Papadi ya Nnete kapa Mafosisa

Tshwaya hore ebe polelo ka nngwe ka tlase mona ke nnete kapa mafosisa.

$2 > 3$

nnete

mafosisa

$4 < 7$

nnete

mafosisa

$5 > 1$

nnete

mafosisa

$6 < 8$

nnete

mafosisa

$10 = 5 + 5$

nnete

mafosisa

$1 + 2 > 4$

nnete

mafosisa

$6 + 2 = 4 + 4$

nnete

mafosisa

$3 - 0 = 3$

nnete

mafosisa

$4 + 3 < 6$

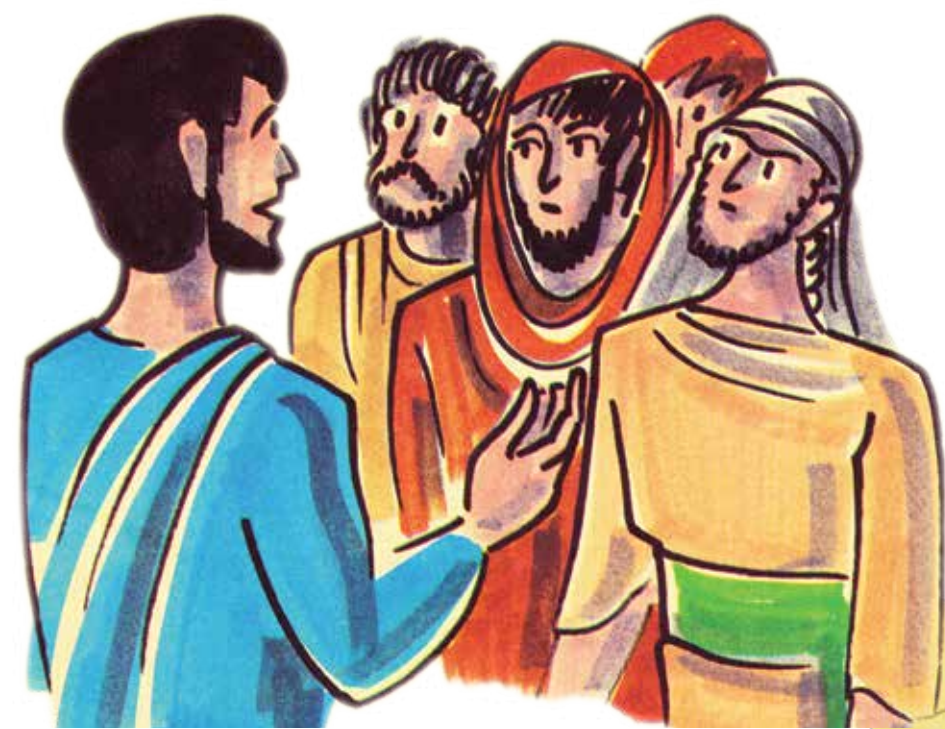
nnete

mafosisa



Mosamaria ya molemo

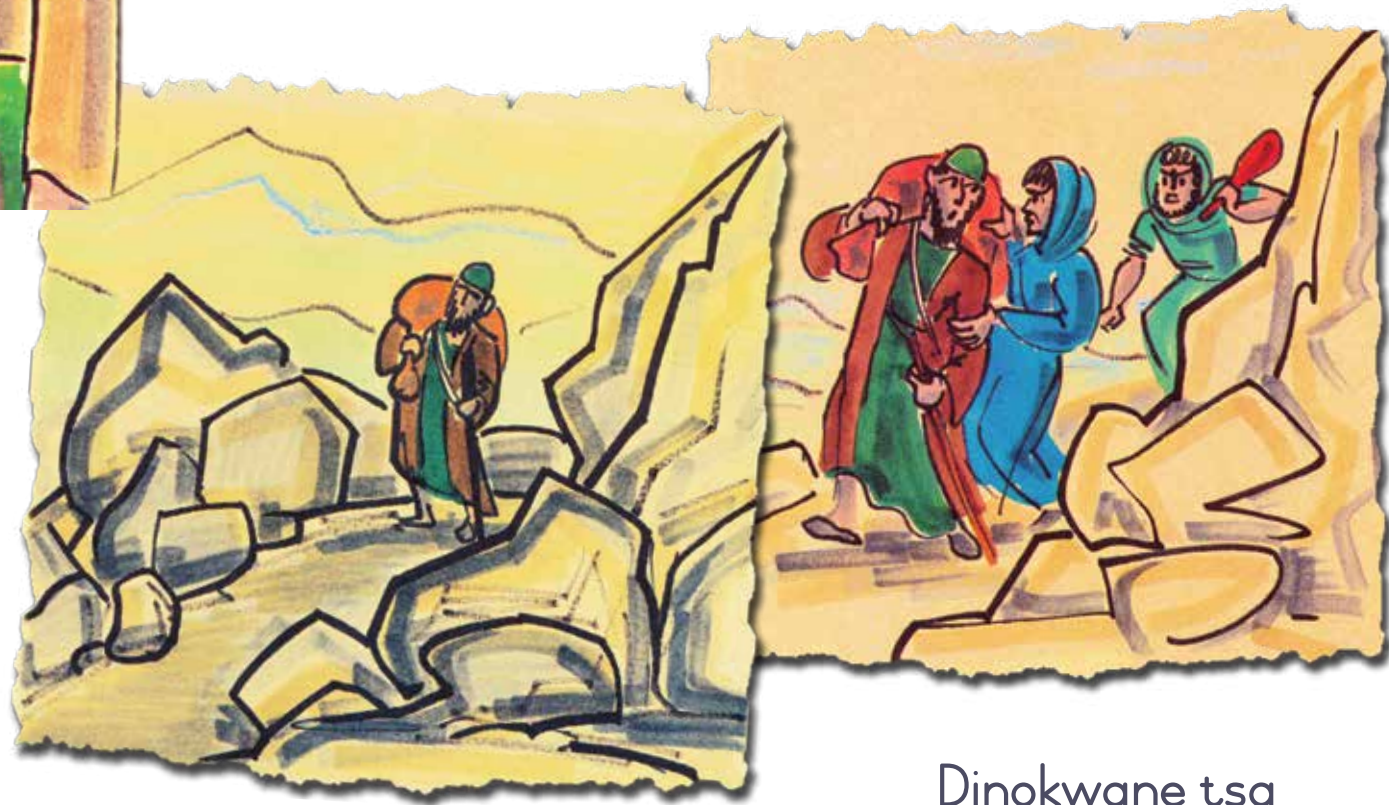
Ka letsatsi le leng
Jesu o ne a bua ho batho.



Motho e mong
o ne a tsamaya tseleng.

Monna e mong a mmotsa, a re:
“Wa heso ke mang?”

Yaba Jesu o phethela
batho pale.



Dinokwane tsa
mo futuhela.



Tsa mo tabolela diaparo,
mme tsa mo kgakgatha.

Ba batlile ba mmolaya,
mme ba mo siya a kakaletse moo.





Moprista a feta
hona tseleng eo.

Ha a bona monna eo,
a mo kwekwetla.



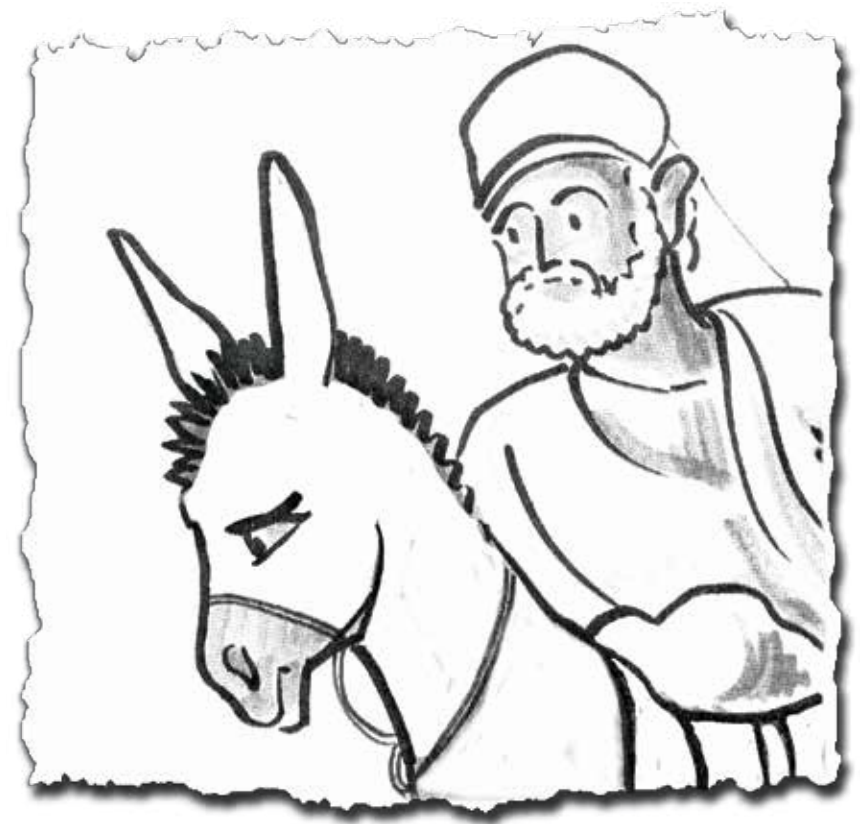
Hona tseleng eo,
monna ya
sebeletsang ka
tempeleng, a feta.



Le enwa a mo feta,
a mo tadima feela,
mme le yena
a mo kwekwetla.



Empa monna wa Mosamaria
le yena a feta tseleng ena.



Ha a bona monna enwa wa batho
ya kgakgathilweng
ke dinokwane,
a mo utlwela bohloko,
mme a ya ho yena.



A tshela maqeba a hae
ka ole le ka veine,
mme a a tlamisa.

Jwale a mo palamisa
eseleng ya hae.





Ka letsatsi le
hlahlamang a ntsha
ditjhelete tse pedi tsa
silefera.

A isa monna enwa
tlung ya baeti.

A mo hlokomela
tlung ena ya baeti.



A di nea monga ntlo
ya baeti, a re:
“Mo oke.
Mohla ke kgutlang hape,
ke tla o buseletsa sohle
seo o ileng wa se
sebedisa kathoko
ho sena.”



Ha Jesu a qetile

ho pheta pale ena, a re:

“Ke mang eo ebileng wa habo monna eo ya ileng a kgakgathwa?”

Monna a araba, a re:

“Ke ya ileng a ba mohau ho yena.”

Yaba Jesu o re:

“Le wena etsa jwalo.”



a **b** Fumana Mantšwe

Fumana mantšwe a lenaneng le lentšwe le le leng le patilweng.

- thuso
- mosamaria
- dikhoine
- diaparo
- dikebekwa
- tsela
- moruti
- esele

h	o	d	t	m	k	o	i	n	e	k
e	s	i	s	o	w	j	d	i	t	e
t	r	k	u	s	a	e	i	n	s	b
h	u	e	j	a	e	s	e	l	e	e
u	t	b	e	m	s	u	a	o	l	o
s	o	e	h	a	o	n	j	e	a	m
o	r	k	o	r	a	m	e	k	u	o
s	u	w	o	i	k	o	r	o	s	r
d	i	a	p	a	r	o	d	s	o	u
e	s	e	o	i	n	e	k	a	o	t
d	i	k	h	o	i	n	e	m	d	i

²₃ Phetapheto e kopakantsweng

Araba potso ka nngwe ya phetapheto ho tse ka tlase.

$1 \times 2 =$

2

$2 \times 3 =$

$3 \times 1 =$

$2 \times 4 =$

$5 \times 2 =$

$3 \times 3 =$

$2 \times 6 =$

$3 \times 4 =$



Jesu o kgutsisa sefefo



Jesu a kena ka sekepeng.

Barutuwa ba hae le bona
ba ne ba le ka sekepeng.

Ba qala ho sesisetsa
kamose wane ho letsha.





Jesu o ne a robetse
karolong e kamorao ya sekepe.

Hanghang ha tsoha
sefelo se matla.



Maqhubu a qala ho kena
ka sekepeng.

Empa Jesu o ne a ntse a robetse.



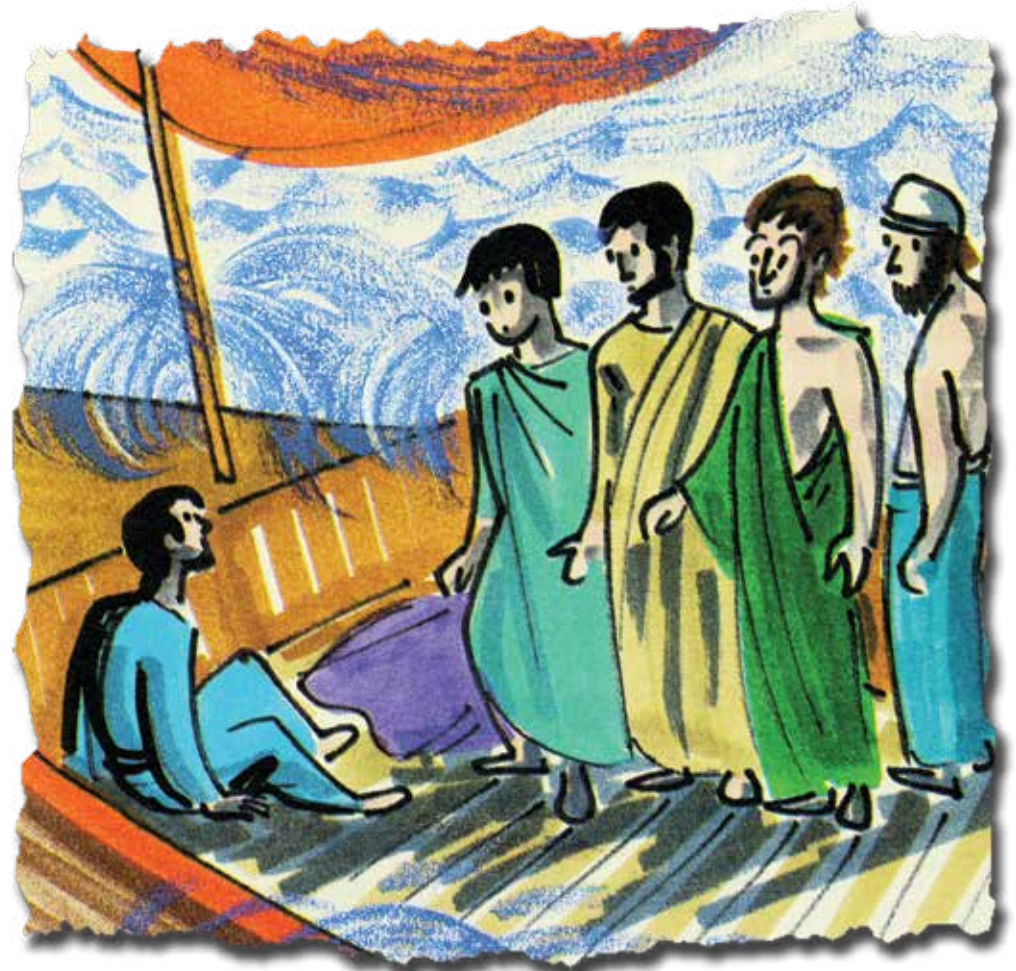
Barutuwa ba tla ho Jesu,
mme ba mo tsosa.

Ba re: “Re pholose, Morena!”
Re a timela!”



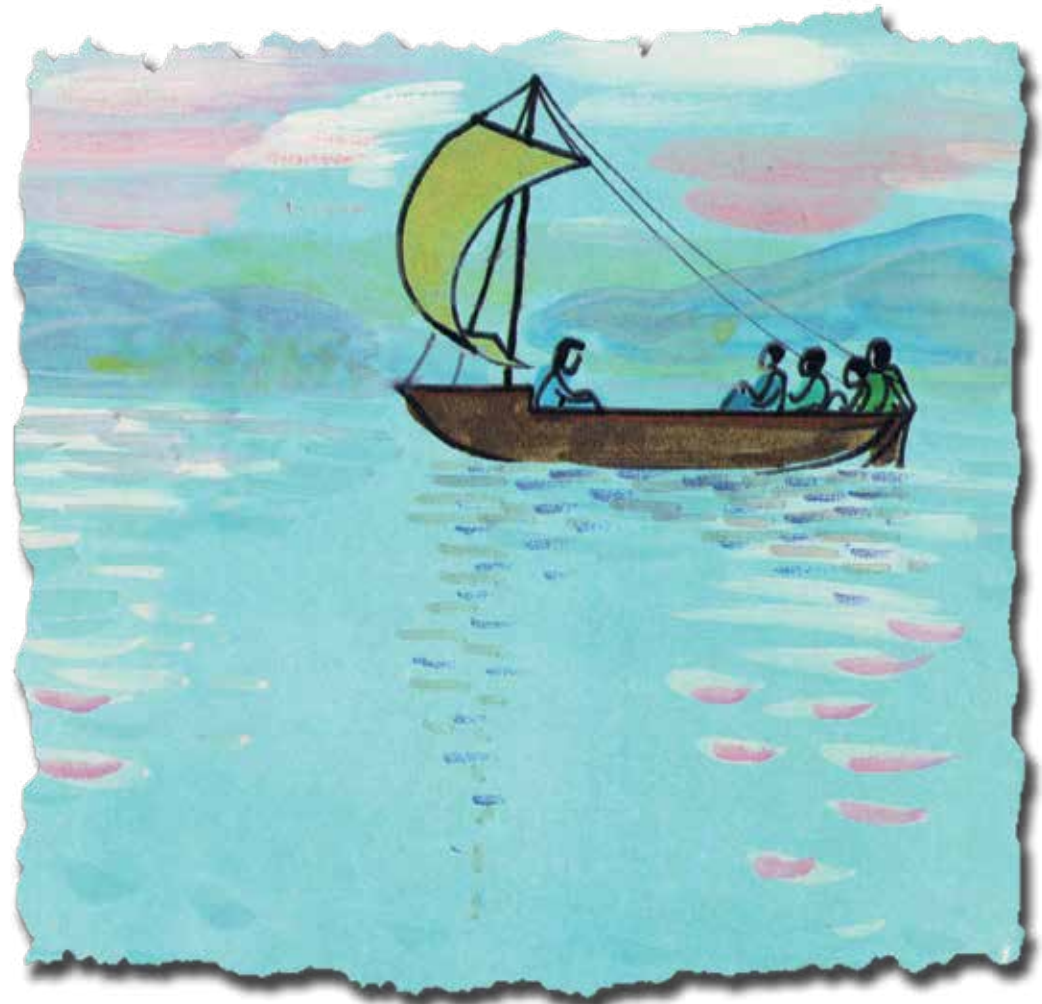
Jesu a re:
“Le boi keng?”

Jesu a tsoha.



A kgalemela meya
le maqhubu.

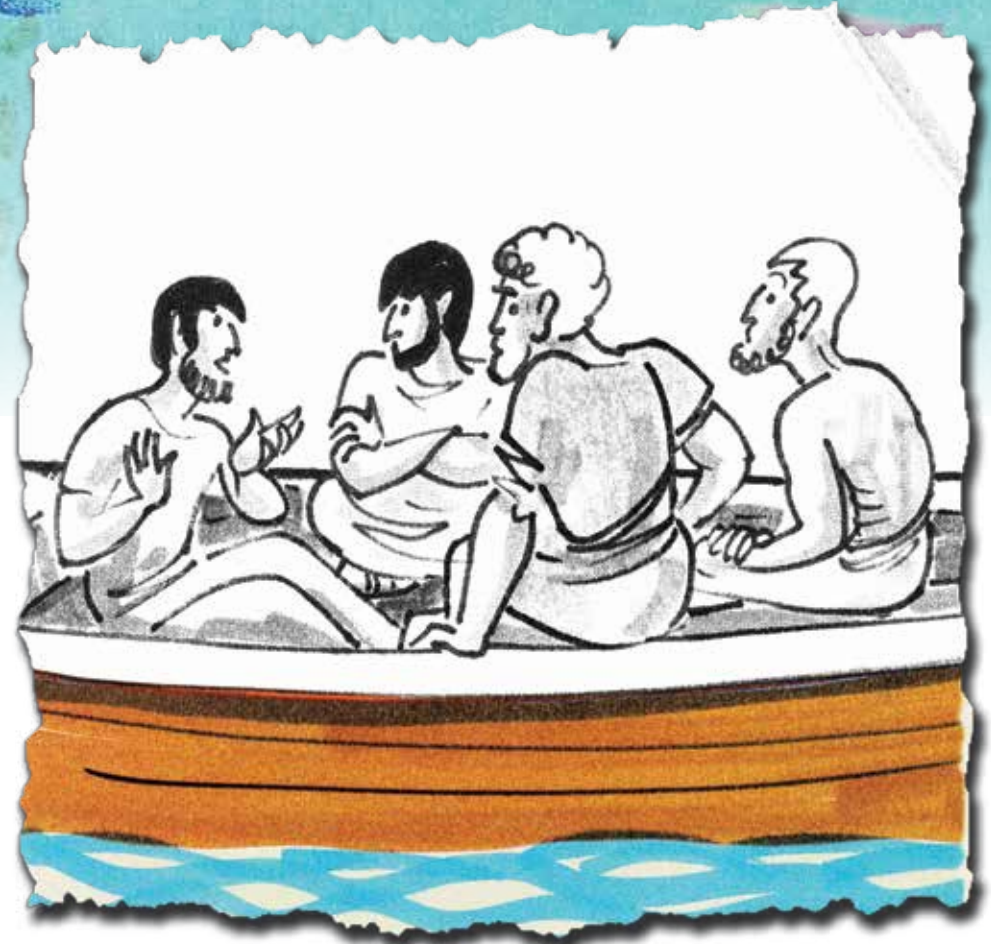
Jesu a re:
“Kgutsa! Didimala!”



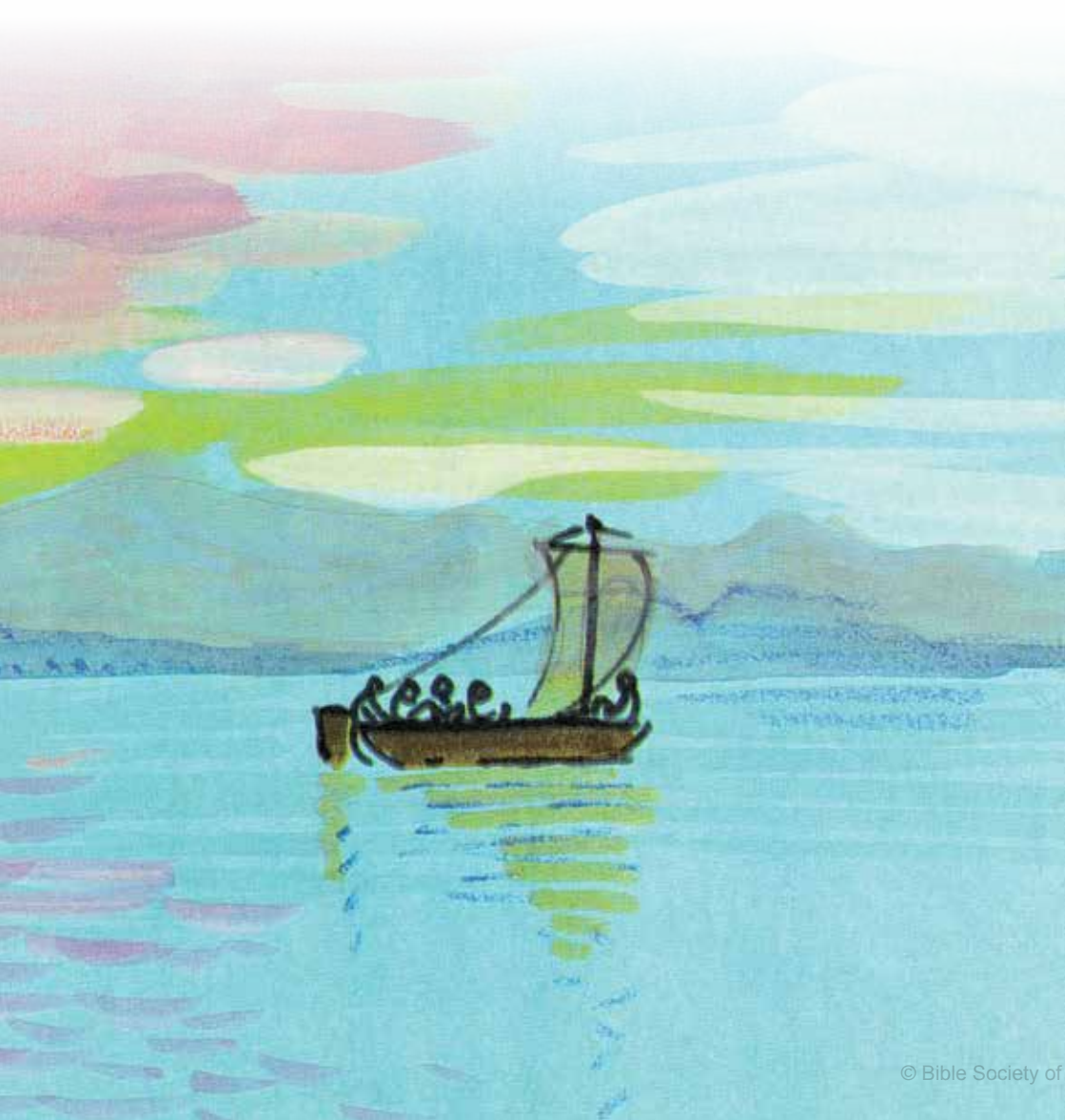
Haeba le kgutso e kgolo.

Barutuwa ba makala,
mme ba tshoha.

Ba buisana, ba re:
“Motho eo ke mang?
Ha e le moo a mamelwa
ke meya le maqhubu!”



Jesu le barutuwa ba hae ba
sesisetsa kamose wane ho letsha.



a **b** Qetella Mantswe

Tlatsa ditlhaku tse siilweng ho qetella pale
e ka tlase.

1. Jeso a palama hodima

 k s a

2. Ba tshelela ka nqane ho

 t h

3. Jeso o ne a sa tsoha , o ne a sa ntse a

 b e

4. Ho ne ho ena le

 s f se seholo

5. Seketswana se ne se tlo

 t e l

6. Jeso a laela moya le maqhubu ho

 u s

7. Yaba sefefe se a

 o b

2 3 Fumana Fomula

O ka fihla jwang dikarabong tse ka tlase mo?

• 8

• 14

• 12

• 6

• 9

• 11

7	+	12	-	9
+	4	÷	5	+
7	×	2	×	4
-	3	×	3	+
6	+	5	÷	6



Sakiya

Ho ne ho ena
le monna ya
bitswang
Sakiya.

Bohle ba ne ba
mo tseba.





Sakiya e ne e le morui ya neng a phela Jeriko.

Batho ba ne ba sa mo rate, hobane e ne e le molekgetho.

Sakiya o ne a bokella tjhelete ho batho.

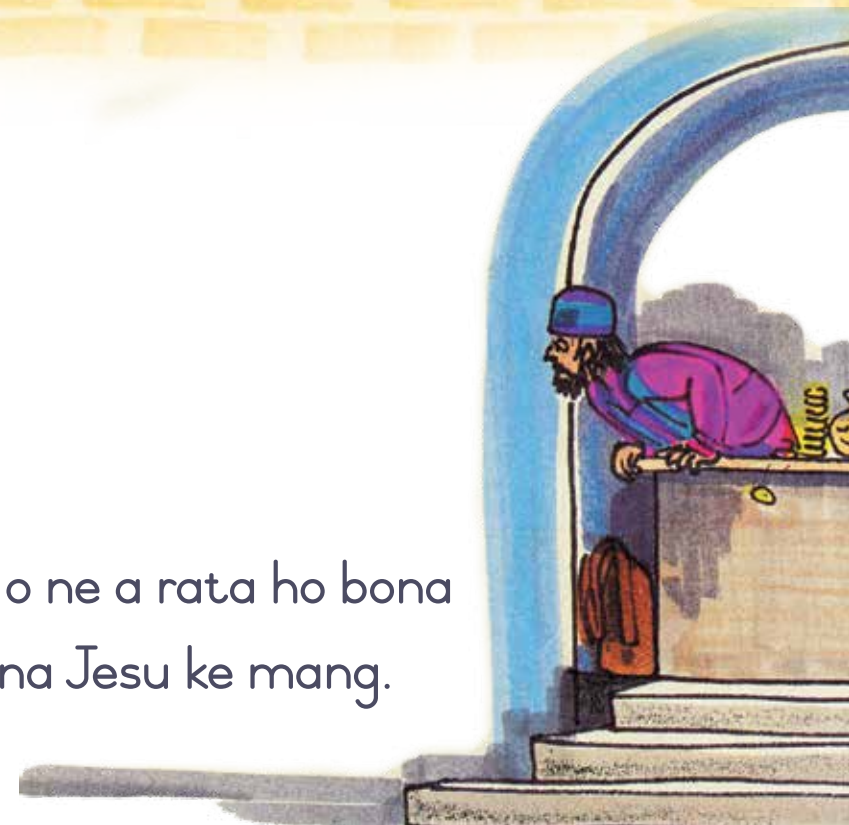
Tjhelete ena a e isa ho babusi.





Ka letsatsi le leng Jesu
a fihla Jeriko.

Sakiya o ne a rata ho bona
hore na Jesu ke mang.





Sakiya a mathela kapele
ho letshwele,
mme a hlwella sefateng.

Empa Sakiya o ile a sitwa,
hobane o ne a le
mokgutshwanyane.



A hlwella sefateng
hore a tle a bone Jesu.



Ha Jesu a fihla sebakeng seo
a tadima hodimo.



Jesu a re:
“Sakiya, phakisa o theohe.
Eka kgona ke hlole ha hao kajeno.”



Sakiya a phakisa a theoha.

Sakiya a amohela Jesu
ka thabo tlung ya hae.



Sakiya a thaba
haholo.



Batho ba boneng hona
ba qala ho korotla.

Ba re:

“Jesu o fapohetse
ha monna wa moetsadibe!”



Sakiya a ema,
mme a re ho Jesu:

“Monghadi, maruo a ka
ke tla arolela mafutsana.



Haeba ho ena le e mong
eo ke mo amohileng ho hona ka mano
ke tla mmuseletsa hona hane.”

Jesu a re:

“Kajeno tsohle di lokile
lelapeng lena.

Ke tlile ho pholosa
batho ba lahlehileng.”



Bonang kamoo Sakiya a
thabileng kateng!



^a_b Fumana Diphoso

Fumana mme o dikanyetse diphoso ho le leng le leng
la mantswe a peletilweng hampe ka tlase mona.

m o e t s a d e b e

s i f a t e n g

a m o h e l l l

k a j e n n

t l y n g

q w l a

t h o b a

t h e o o a



2 3 Ho bala dikhoine

Thusa Sakiya ho bala dikhoine tsa hae.



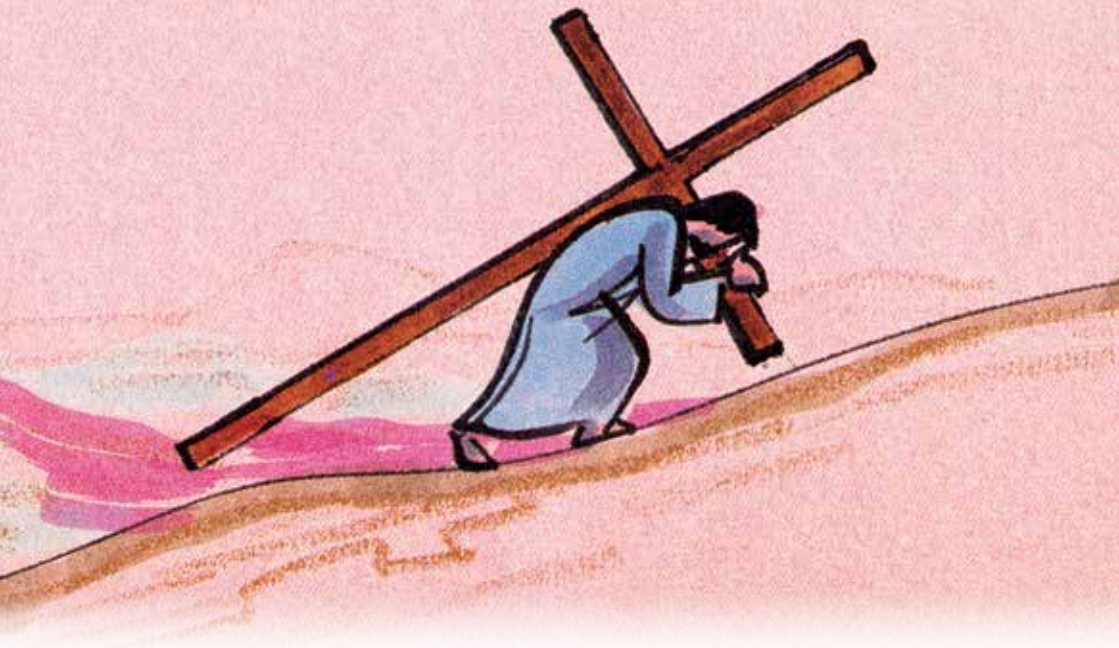
$$1c + 2c + 5c =$$

$$2c + 5c + 10c =$$

$$1c + 1c + 5c + 20c =$$

$$2c + 2c + 5c + 5c + 10c + 10c =$$

$$1c + 1c + 5c + 10c + 50c =$$



Jesu o a phela

Jesu le barutuwa
ba ya serapeng.

Jesu a rapela, a re:
“A ho phethahale thato
ya hao ka nna.”





Moprista e Moholo a botsa Jesu:
“Na o Mora wa Modimo?”
Jesu a arabela: “Ke yena.”

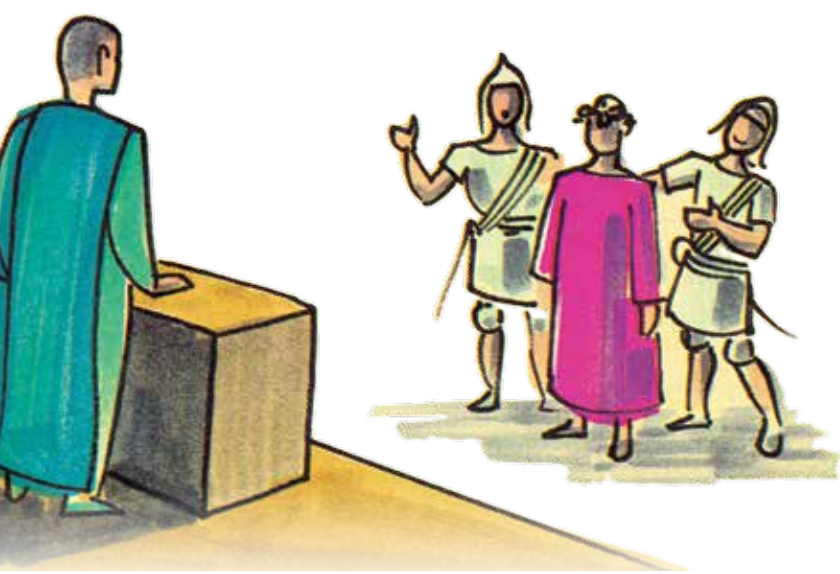
Jwale Moprista e Moholo a re
ho ditso tsa lekgotla:
“Re etse jwang ka Jesu?”

Ba arabela: “O lokelwa ke lefu.”

Jwale Judase a fihla,
a eteletse pele banna
ba nkileng disabole le dikoto.

Ba fihla, mme ba
tshwara Jesu.
Ba isa Jesu ho
Moprista e Moholo.





Baetapele ba Bajuda ba isa Jesu kapele ho Pilato, yena a neelana ka Jesu ho masole.



Masole a soma Jesu, mme a mo rwesa mofapahlooho wa meutlwa.

Ba isa Jesu sebakeng se bitswang Gologotha.

Gologotha ke hore, "Sebaka sa Lehata".



Masole a kgokgothella Jesu sefapanong.



Maria, mma Jesu, o ne a eme haufi.

O ne a eme pela Johanne motswalle
eo Jesu a neng a mo rata.

Jesu a re ho mmae:
“Ke mora wa hao.”

A re ho motswalle wa hae:
“Ke mmao.”

Johanne a tsamaya
le Maria a phela le
yena ha hae.

Jesu a howa ka
lentswe le
phahameng.
Yaba o neela moya.





Ba theola setopo sa Jesu
sefapanong.

Ba mo epela serapeng.

Ba phikolsetsa lejwe le
leholo monyakong wa
lebitla.



Ka Sondaha hoseng basadi ba
bang ba ya lebitleng.

Ba bona lejwe le se le phikolositswe.

Empa setopo sa Jesu se
se se le siyo!

Lengelo le tswang
lehodimong la re ho basadi:
“Jesu o a phela!
Tsamayang le bolelle
metswalle ya hae.”

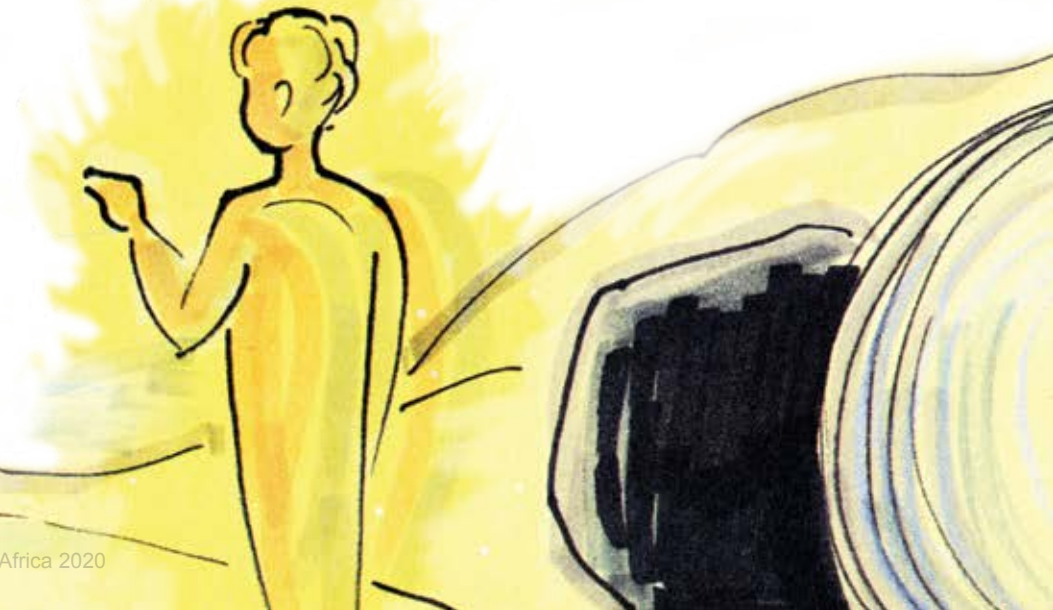


Ka lona letsatsi leo banna ba
babedi ba ne ba eya Emmause.

Ba ne ba buisana ka ditaba
tsohle tse etsahetseng.

Ba ne ba swabile haholo.

Jesu a fihla, mme a
buisana le bona.





Jesu o ba bolella hore o ne a
tlamehile ho shwa.

Yaba ba fihla motseng.
Banna ba re ho Jesu:
“Dula le rona.”



Jesu a kena, mme a dula
fatshe a ja le bona.



Hang, banna bao ba ya Jerusalema.

Ba bolella metswalle ya bona se
etsahetseng.

E ile yare ha a leboha
bakeng sa bohobe,
banna ba tseba
hore ke Jesu,
empa Jesu a
ba nyamella.

Ba re ba bone Jesu.



Ba babedi bana ba ne ba ntse ba
ba bolella kamoo ba boneng Jesu.

Hanghang Jesu ka seqo a
ema hara bona.

Jesu a re ho bona: “Ke nna.”



Ba tlala thabo.

Ba tseba hore Jesu o a phela!

a **b** Serarolli sa khouto

Tlhaku ka nngwe e hokantswe le nomoro.
Na o ka rarolla dikhouto tse ka tlase mo?

7 15 12 15 7 15 20 8 1
 | | | | | | |

2 1 10 21 4 1
 | | | | |

2 1 18 21 20 21 23 1
 | | | | | | |

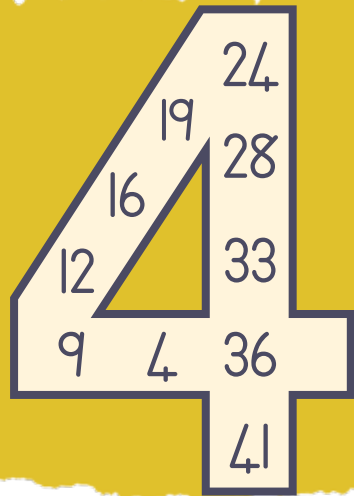
13 1 19 15 12 5
 | | | | |

a	b	c	d	e	f	g	h	i	j	k	l	m
1	2	3	4	5	6	7	8	9	10	11	12	13

n	o	p	q	r	s	t	u	v	w	x	y	z
14	15	16	17	18	19	20	21	22	23	24	25	26

2 3 Diphoso tse Ngata

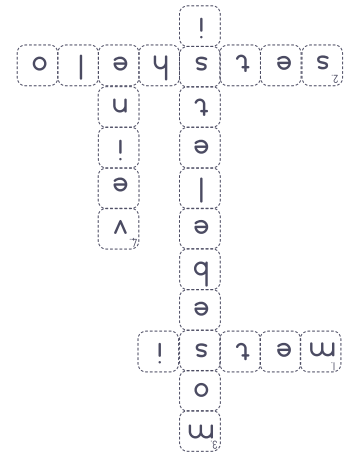
Fumana mme o dikanyetse dinomoro tsohle tseo e seng diphethapheto tsa nomoro e kgolo.



Papadi ya Nnete kapa
Matfosisa:
1. matfosisa 2. nnete
3. nnete 4. nnete
5. nnete 6. matfosisa
7. nnete 8. nnete
9. matfosisa

$$\begin{aligned} 7 &= 2 + 5 \\ 2 &= 7 - 5 \\ 3 &= 7 - 4 \end{aligned}$$

u a l e p d i
d u n e i l i a



Phazele ya Mantsewe:

7	=	7	+	3
=		=		=
5	=	3	+	2
+		+		+
2	=	1	+	1

Keriti ya Dinomoro:

j e s u
e u j s

i e n g e i o i
u l i l e o o i e g

Malepa a mantsewe:

Ditharollo

Ditharollo

Fumana Diphoso:

moeetsadibele sefatening

amohelala

kajenono

thehohla

Ho bala dikhoine:

$1c + 2c + 5c = 8c$

$2c + 5c + 10c = 17c$

$3c + 5c + 20c = 28c$

Serarolli sa khouto:

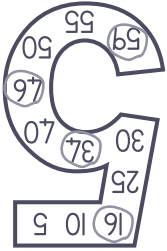
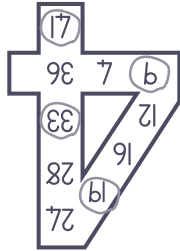
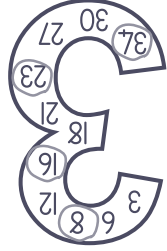
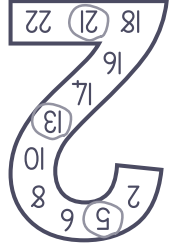
g o l o g o t h a

b a j u d a

b a r u t u w a

m a s o l i e

Diphoso tse Ngata:



Ditharollo

Fumana Mantswa:

h	o	d	t	m	k	o	i	n	e	k
e	s	i	s	o	w	j	d	i	t	e
t	r	k	u	s	a	e	i	n	s	b
h	u	e	j	a	e	s	e	l	e	e
u	t	b	e	m	s	u	a	o	l	o
s	o	e	h	a	o	n	j	e	a	m
o	r	k	o	r	a	m	e	k	u	o
s	u	w	o	i	k	o	r	o	s	r
d	i	a	p	a	r	o	d	s	o	u
e	s	e	o	i	n	e	k	a	o	t
d	i	k	h	o	i	n	e	m	d	i

Phetapheto e kopakantsweng:

$1 \times 2 = 2$

$2 \times 3 = 6$

$3 \times 1 = 3$

$2 \times 4 = 8$

$5 \times 2 = 10$

$3 \times 3 = 9$

$2 \times 6 = 12$

$3 \times 4 = 12$

Qetella Mantswa:

1. seketswana
2. letsha
3. robetse
4. sefeto
5. tetebela
6. kgutsa
7. kokobela

Fumana Formula:

7	+	12	-	9
+	7	÷	5	+
7	×	2	×	7
+	3	×	3	+
6	÷	5	+	6

Ditheibole tsa Phetapheto (1-10)

1x	2x	3x	4x	5x
$1 \times 1 = 1$	$2 \times 1 = 2$	$3 \times 1 = 3$	$4 \times 1 = 4$	$5 \times 1 = 5$
$1 \times 2 = 2$	$2 \times 2 = 4$	$3 \times 2 = 6$	$4 \times 2 = 8$	$5 \times 2 = 10$
$1 \times 3 = 3$	$2 \times 3 = 6$	$3 \times 3 = 9$	$4 \times 3 = 12$	$5 \times 3 = 15$
$1 \times 4 = 4$	$2 \times 4 = 8$	$3 \times 4 = 12$	$4 \times 4 = 16$	$5 \times 4 = 20$
$1 \times 5 = 5$	$2 \times 5 = 10$	$3 \times 5 = 15$	$4 \times 5 = 20$	$5 \times 5 = 25$
$1 \times 6 = 6$	$2 \times 6 = 12$	$3 \times 6 = 18$	$4 \times 6 = 24$	$5 \times 6 = 30$
$1 \times 7 = 7$	$2 \times 7 = 14$	$3 \times 7 = 21$	$4 \times 7 = 28$	$5 \times 7 = 35$
$1 \times 8 = 8$	$2 \times 8 = 16$	$3 \times 8 = 24$	$4 \times 8 = 32$	$5 \times 8 = 40$
$1 \times 9 = 9$	$2 \times 9 = 18$	$3 \times 9 = 27$	$4 \times 9 = 36$	$5 \times 9 = 45$
$1 \times 10 = 10$	$2 \times 10 = 20$	$3 \times 10 = 30$	$4 \times 10 = 40$	$5 \times 10 = 50$
6x	7x	8x	9x	10x
$6 \times 1 = 6$	$7 \times 1 = 7$	$8 \times 1 = 8$	$9 \times 1 = 9$	$10 \times 1 = 10$
$6 \times 2 = 12$	$7 \times 2 = 14$	$8 \times 2 = 16$	$9 \times 2 = 18$	$10 \times 2 = 20$
$6 \times 3 = 18$	$7 \times 3 = 21$	$8 \times 3 = 24$	$9 \times 3 = 27$	$10 \times 3 = 30$
$6 \times 4 = 24$	$7 \times 4 = 28$	$8 \times 4 = 32$	$9 \times 4 = 36$	$10 \times 4 = 40$
$6 \times 5 = 30$	$7 \times 5 = 35$	$8 \times 5 = 40$	$9 \times 5 = 45$	$10 \times 5 = 50$
$6 \times 6 = 36$	$7 \times 6 = 42$	$8 \times 6 = 48$	$9 \times 6 = 54$	$10 \times 6 = 60$
$6 \times 7 = 42$	$7 \times 7 = 49$	$8 \times 7 = 56$	$9 \times 7 = 63$	$10 \times 7 = 70$
$6 \times 8 = 48$	$7 \times 8 = 56$	$8 \times 8 = 64$	$9 \times 8 = 72$	$10 \times 8 = 80$
$6 \times 9 = 54$	$7 \times 9 = 63$	$8 \times 9 = 72$	$9 \times 9 = 81$	$10 \times 9 = 90$
$6 \times 10 = 60$	$7 \times 10 = 70$	$8 \times 10 = 80$	$9 \times 10 = 90$	$10 \times 10 = 100$